

710 CEDAR LAKE BOULEVARD

SPACE FOR LEASE - CEDAR LAKE OFFICE PARK



LEASE SUMMARY

Available SF: 1,475 - 5,037 SF

Lease Rate: \$16.50 SF/YR

Lease Type: Full Service

Year Built: 1996

Building Size: 11,415 SF

PROPERTY OVERVIEW

710 Cedar Lake is a two-story, 11,415 square foot office building, located in the Cedar Lake Office Park. The location is ideally situated less than a mile from the Broadway Extension and less than 3 miles from I-35. The available space is able to conform to multiple business types, and layout designs.

PROPERTY HIGHLIGHTS

- Flexible space layout with good mix of open space and private offices
- Back-up generator
- Conference Room
- Large amount of free surface parking spaces
- Kitchen
- Security Alarm with magnetic locks on outside doors
- Several offices overlook the lake directly south of the building

For more information please contact:

TRE DUPUY

tdupuy@priceedwards.com
405.843.7474

710 CEDAR LAKE BOULEVARD

AVAILABLE SPACES



SPACE	SPACE USE	LEASE RATE	LEASE TYPE	SIZE (SF)	TERM	COMMENTS
Suite A	Office Building	\$16.50 SF/YR	Full Service	1,869 SF	Negotiable	
Suite B	Office Building	\$16.50 SF/YR	Full Service	1,475 SF	Negotiable	
Suite C	Office Building	\$16.50 SF/YR	Full Service	3,034 SF	Negotiable	
Suite D	Office Building	\$16.50 SF/YR	Full Service	5,037 SF	Negotiable	

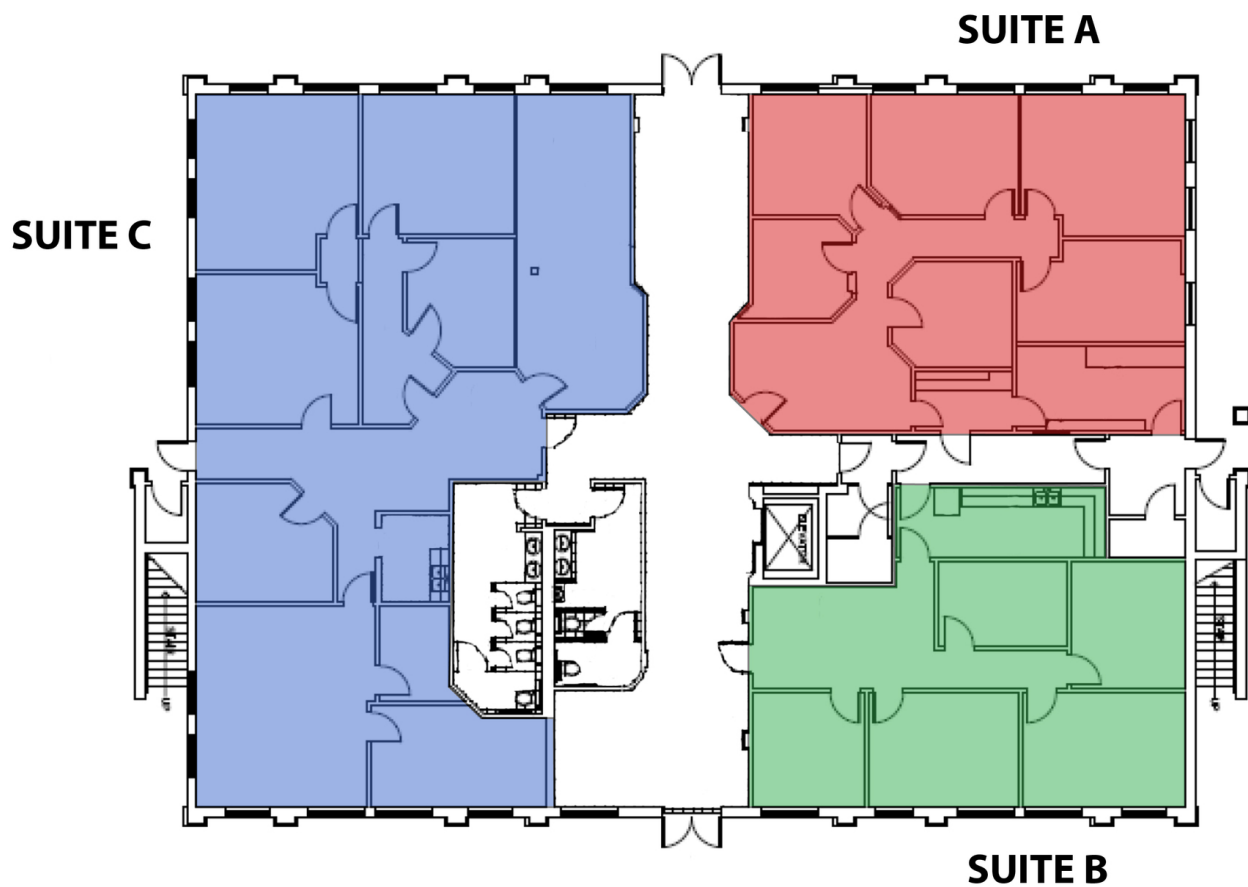
For more information please contact:

TRE DUPUY

tdupuy@priceedwards.com

405.843.7474

FLOOR PLANS



For more information please contact:

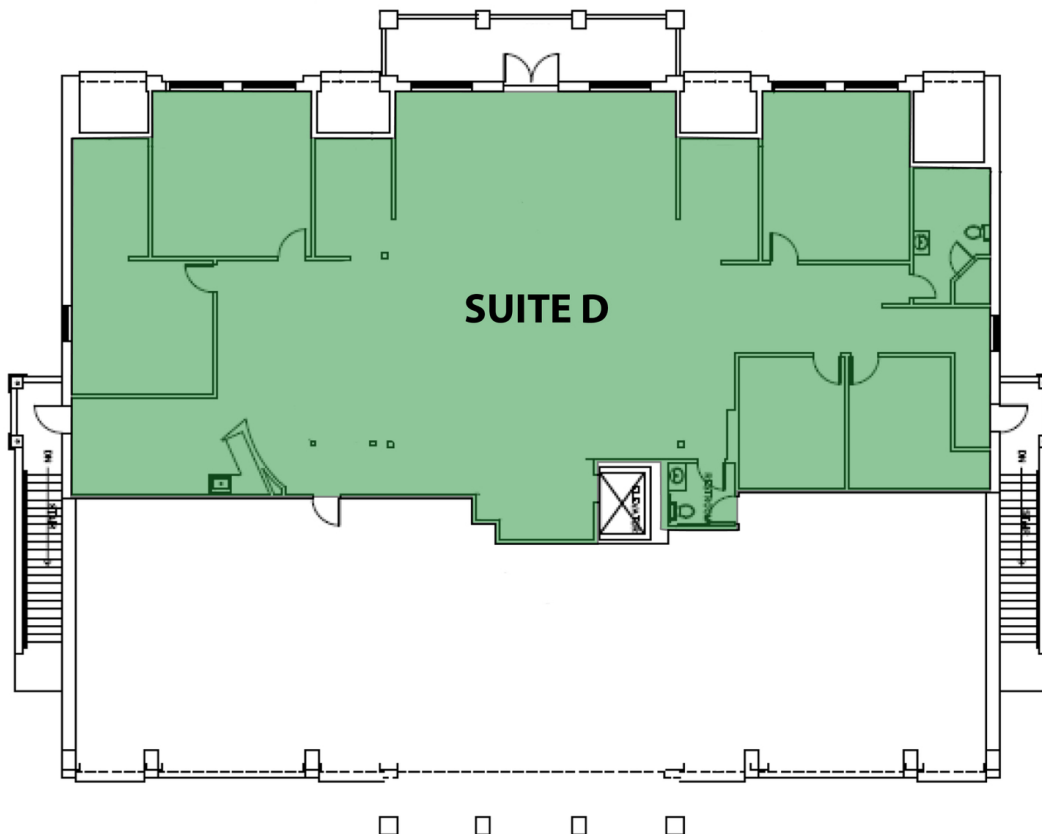
TRE DUPUY

tdupuy@priceedwards.com

405.843.7474

710 CEDAR LAKE BOULEVARD

FLOOR PLANS



For more information please contact:

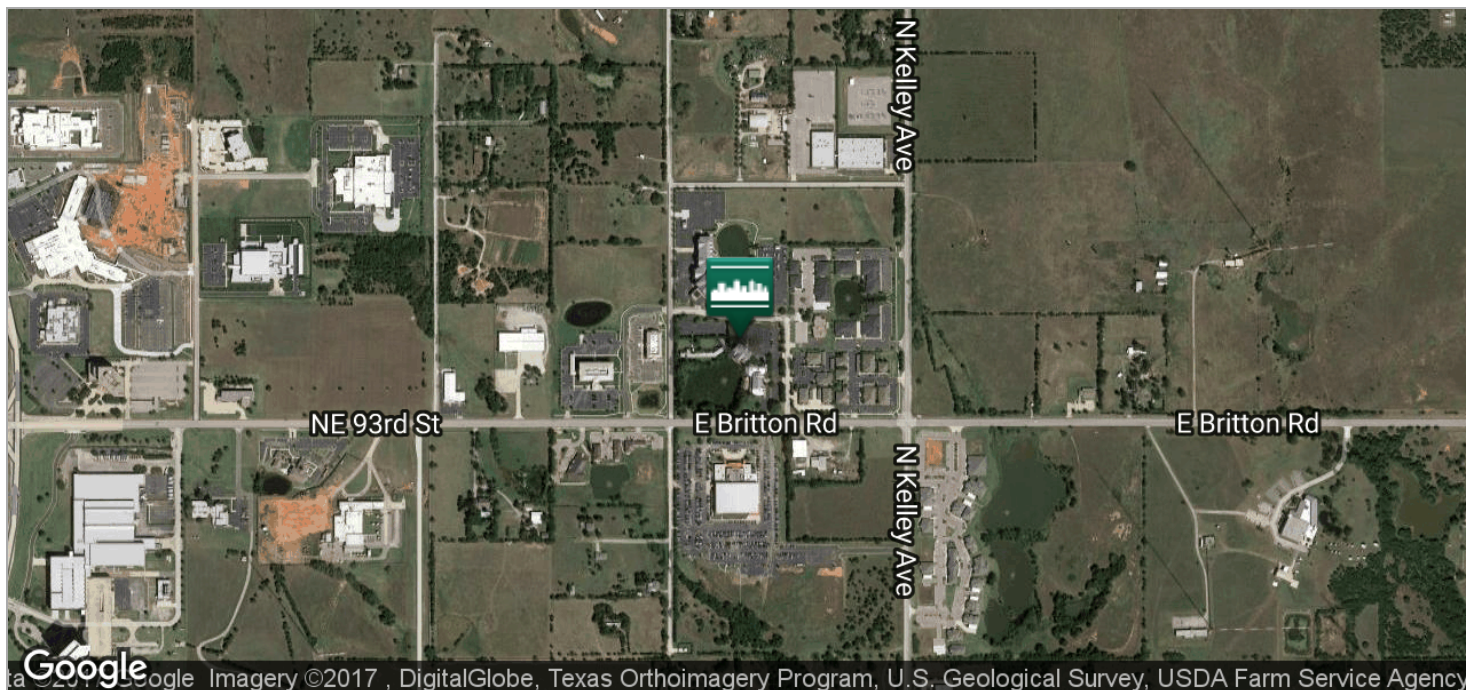
TRE DUPUY

tdupuy@pricedwards.com

405.843.7474

710 CEDAR LAKE BOULEVARD

LOCATION MAPS



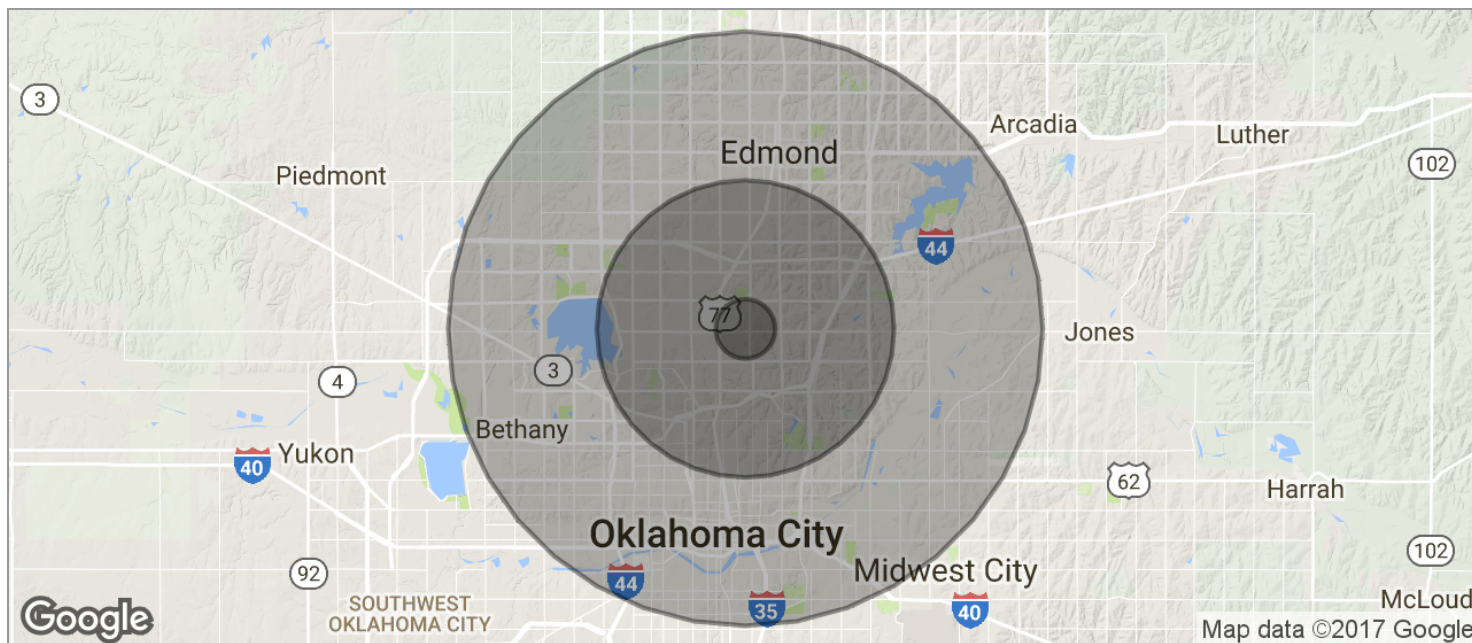
For more information please contact:

TRE DUPUY

tdupuy@pricedwards.com

405.843.7474

DEMOGRAPHICS MAP



POPULATION	1 MILE	5 MILES	10 MILES
TOTAL POPULATION	765	126,543	531,479
MEDIAN AGE	42.7	35.3	35.0
MEDIAN AGE (MALE)	42.7	32.7	33.8
MEDIAN AGE (FEMALE)	42.9	37.0	36.0
HOUSEHOLDS & INCOME	1 MILE	5 MILES	10 MILES
TOTAL HOUSEHOLDS	289	54,194	216,508
# OF PERSONS PER HH	2.6	2.3	2.5
AVERAGE HH INCOME	\$67,616	\$69,609	\$65,081
AVERAGE HOUSE VALUE		\$196,846	\$176,620

* Demographic data derived from 2010 US Census

For more information please contact:

TRE DUPUY

tdupuy@priceedwards.com

405.843.7474